

RADITEK INC.

R2SC-800-1000M-PS10-1W-S

code-p4

Features

- Frequency Range 800 – 1000 MHz
- Low Cost
- Industry Standard SMT package
- Available in Tape-and -Reel
- 50 Ohms Characteristic Impedance

Description

The R2SC-0810 is a 0° In-phase two way power splitter designed for applications that require small, low cost and highly reliable surface mount components. Applications may be found in broadband, wireless and other communications systems. S-Parameters are available on request.

Specifications

Parameter	Minimum	Typical	Maximum
Frequency Range (MHz)	800		1000
Insertion Loss (dB)		0.5	1.0
Isolation (dB)	12	20	
Return Loss (dB)		14	11
Amplitude Balance (dB)		0.2	0.4
Phase Balance (Degrees)		1.0	3.0

Note: Typical values represent Mid-band performance @ 25°.

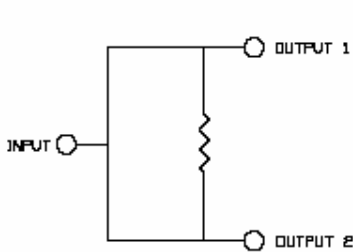
SURFACE MOUNT 2-WAY SPLITTER



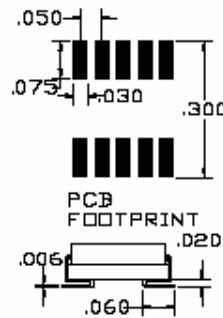
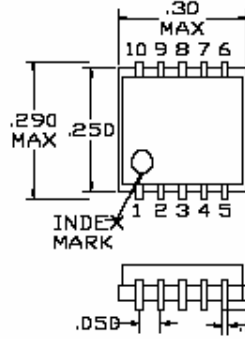
Absolute Maximum Ratings

Parameter	Maximum
RF Power	+33 dBm
Operating Temperature	-55 to +100 °C
Storage Temperature	-55 to +100 °C
Re-flow Temperature	+ 240 °C

Schematic



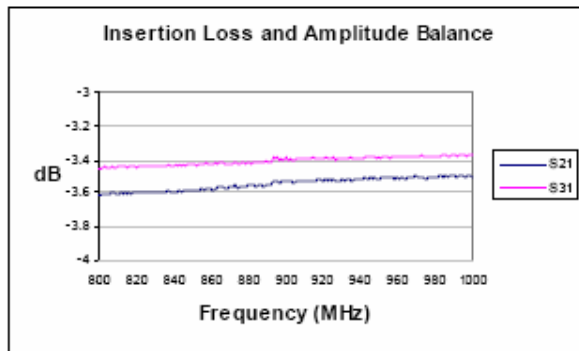
Package – S10



Pin Functions

Function	Pin
INPUT	3
OUTPUT 1	10
OUTPUT 2	6
GROUND	1,2,4,5,7,8,9

Typical Test Data – Insertion Loss and Amplitude Balance



Typical Test Data – Return Loss and Output Isolation

