

RADITEK INC.

R2SC-1200-1600M-PS10-1W-S

code-p4

SURFACE MOUNT 2-WAY SPLITTER

Features

- Frequency Range 1200 – 1600 MHz
- Low Cost
- Industry Standard SMT package
- Available in Tape-and-Reel
- 50 Ohms Characteristic Impedance

Description

The R2SC-1216 is a 0° In-phase two way power splitter designed for applications that require small, low cost and highly reliable surface mount components. Applications may be found in broadband, wireless and other communications systems.

S-Parameters are available on request.



Specifications

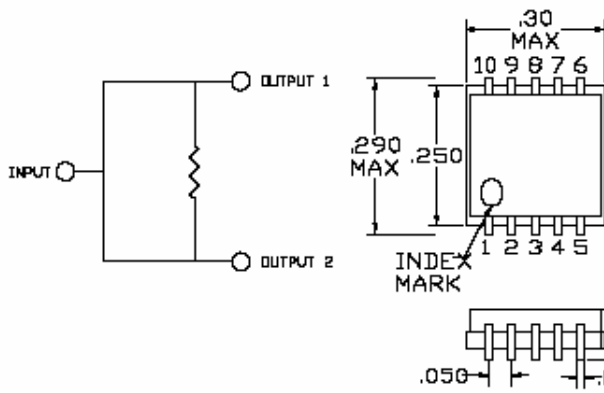
Parameter	Minimum	Typical	Maximum
Frequency Range (MHz)	1200		1600
Insertion Loss (dB)		0.4	1.0
Isolation (dB)	10	15	
Return Loss (dB)		11	9.8
Amplitude Balance (dB)		0.1	0.5
Phase Balance (Degrees)		2.0	5.0

Absolute Maximum Ratings

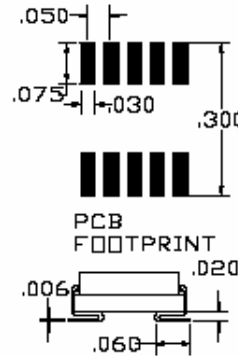
Parameter	Maximum
RF Power	+33 dBm
Operating Temperature	-55 to +100 °C
Storage Temperature	-55 to +100 °C
Re-flow Temperature	+ 240 °C

Note: Typical values represent Mid-band performance @ 25°.

Schematic



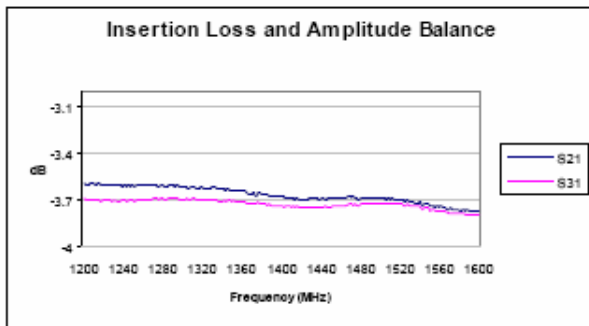
Package – S10



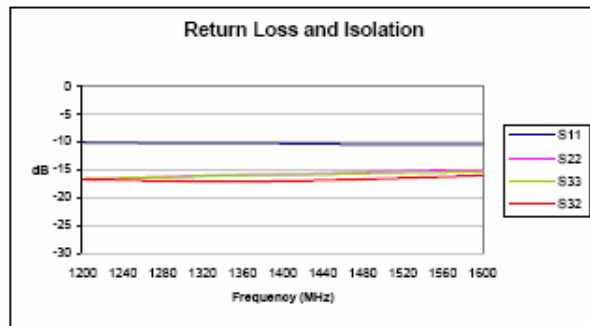
Pin Functions

Function	Pin
INPUT	3
OUTPUT 1	10
OUTPUT 2	6
GROUND	1,2,4,5,7,8,9

Typical Test Data – Insertion Loss and Amplitude Balance



Typical Test Data – Return Loss and Output Isolation



R2SC-1200-1600M-PS10-1W-S

Specifications may be subject to change

03/30/07

WORLD HQ: 1702H Meridian Ave. Suite 127, San Jose, Ca 95125, U.S.A.

Telephone: (408) 266-7404 FAX: (408) 266-4483

WEB: www.raditek.com, E-mail: sales@raditek.com