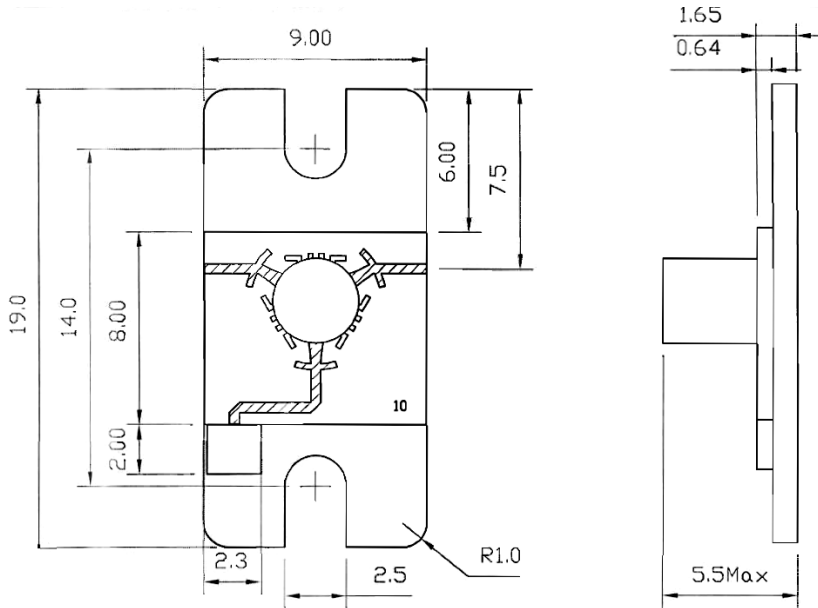


Microstrip Isolator, Wide Band 8.0-12.0GHz, MSWB package, 2Watts Reverse/ 4Watts Forward



<p>Tolerance Table Metric (inch) (unless otherwise stated): Hole diameter +/- 0.1mm, (+/- 0.004") Dimensions (w*h) +/- 0.3 mm, (+/- 0.015") Dimensions (Coax Connector position) +/- 0.3mm, (+/- 0.012") Dimensions (Microstrip pad, Stripline Tab, Machined surfaces) Flatness 0.025/mm, (0.001/ inch) Bend radius 0.8mm, (0.031" or 1/32")</p>
--

Units: mm
Not to scale

Direction of RF:	
R	Default ▶
L	◀

Order Examples: **RADI-8.0-12.0-MSWB-2WR / 4W Fwd-e**
I=ISOLATOR

Specifications		Units
Frequency Range	8.0-12.0	GHz
Insertion Loss	0.7	dB
Isolation	17	dB
VSWR	1.35	:1
Power Forward	4	Watts
Power Load	2	Watts
Operating Temperature Range	-30 to +85	°C
Storage Temperature	130	°C (max)

Notes:

1. Clockwise Rotation
2. Mounting: do not heat above 130 °C
3. RoHS compliant
4. Load optional location and configuration determined by customer.
5. Humidity 5 to 95% non-condensing.
6. Maximum temperature during welding process: +350°C @ 25 msec.