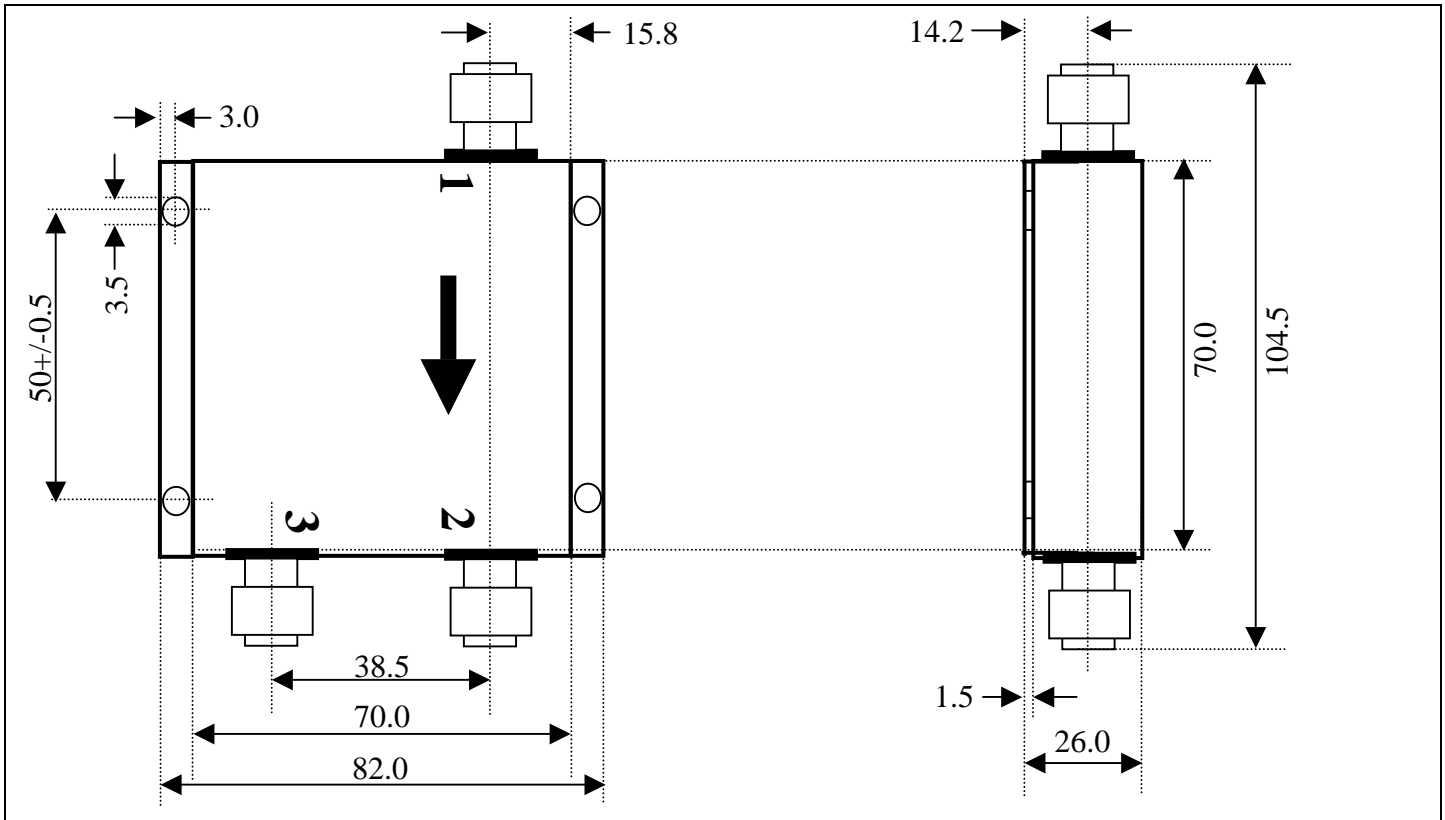


# RADITEK INC.

## Isolator or Circulator with SMA or N connectors RADI-225-400M-SX-XW (5, 35, 10, 50, 100Watts)

5/10/50 Watt isolator has internal load. 100 Watt isolator has external load.



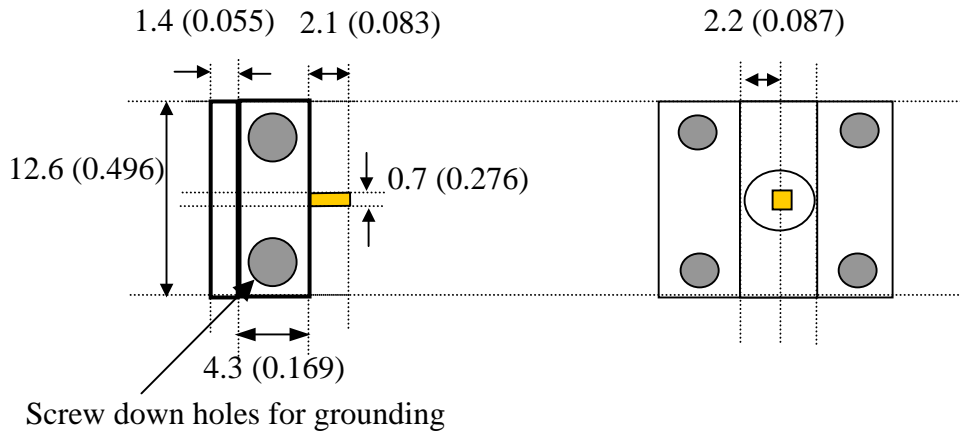
Not to scale, Units:mm

Specifications:	Full		Connector options (X)				
			Port 1	Port 2	Iso	Port 3 male	Port 3 female
Frequency	225-400	MHz					
Insertion loss	1.5*	dB					
Isolation	15*	dB					
VSWR	1.5*	:1					
Power handling for isolator	5 // 35 // 10 // 50 // 100	Watt (forward // reverse)	female	male	-1	-11	-21
Temperature range	-10 to 50	°C	male	female	-2	-12	-22
Connector	SMA or N-type		female	female	-3	-13	-23
			male	male	-4	-14	-24

\*1.0/17/1.4 @ room temp

**\*\*Isolators are to be installed on heat conducting metallic surfaces made on non-magnetic metals (aluminum, copper, ect). It is not advised to install the devices on magnetic surfaces (steel, iron, etc.) and not advised to install the devices at distance less than 20mm within each other.**

# RADITEK INC.



**Alternative connector option (B4), so unit can be used as a "drop in." Note the screw down holes must clamp the grounding surfaces together.**