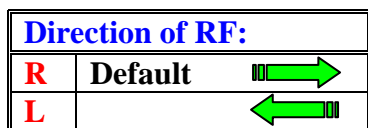
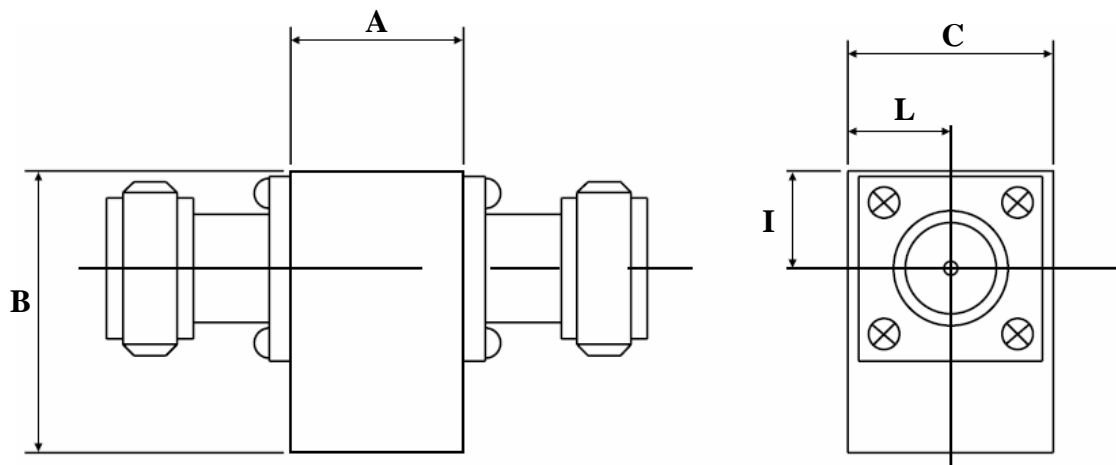


Coaxial Isolator, 7.0-9.5 GHz, (Split Bands) SMA Connectors, 10 Watts RADI-f1-f2-S3-10WR



Units: mm
Not to scale

Order Examples: RADI-7.0-9.0-S3-10WR

I=ISOLATOR / C=CIRCULATOR

N / SMA Connector options (X)				
Isolator			Circulator	
Port 1	Port 2		Port 3 Male	Port 3 Female
Female	Male	-1	-11	-21
Male	Female	-2	-12	-22
Female	Female	-3	-13	-23
Male	Male	-4	-14	-24

Size#	A	B	C	I	L	
1	12.0	20.0	13.0	6.5	6.5	mm
						mm

Size#	Specifications: Frequency GHz	Insertion loss dB (max)	Isolation dB (min)	VSWR :1	Power Fwd Watts	Power Rev Watts	Power Peak kilowatts	Op. Temp °C	Connector
1	7.0-9.0	0.6	18	1.30	10	10	1	-40 to +80	SMA
1	*8.5-9.5	0.4 0.5	23 20	1.20 1.25	10	10	-	+25 -40 to +85	SMA

* Phase Difference $\pm 5^\circ$