

# RADITEK INC.

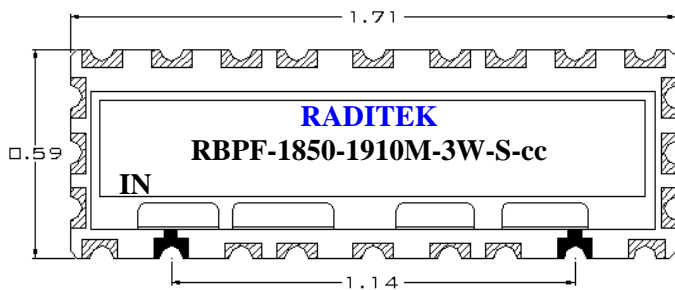
## Ceramic Band Pass Filter 1850 MHz to 1910 MHz, 3 Watts, Surface Mount RBPF-1850-1910M-3W-S-cc

code-j

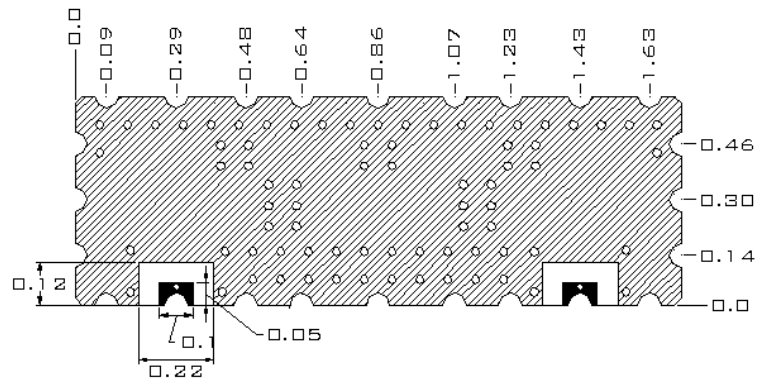
ELECTRICAL SPECIFICATIONS		
ITEM	SPEC	Unit
1	Center Frequency [fo]	1880.0
2	Bandwidth [BW]	fo ± 30 [1850 ~ 1910]
3	Insertion Loss at fo	fo ± 32.5 [1847.5 ~ 1912.5]
4	Ripple in BW	3.0 max.
5	Return Loss in BW	2.0 max.
6	Input Power	3W max.
7	In/Out Impedance	50 Ω
8	Attenuation [Absolute Value]	60.0 dB min. @ 1930~1990 MHz
9	Operation Temperature Range	-40°C to +85°C

### DIMENSIONS

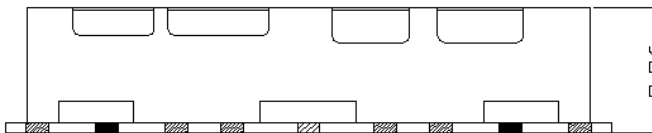
TOP VIEW



BOTTOM VIEW



FRONT VIEW



I/O PORT  
 GROUND  
 TOLERANCE : ±0.01  
 UNIT : INCH

RBPF-1850-1910M-3W-S-cc-j

Specifications may be subject to change

03/27/07

WORLD HQ: 1702H Meridian Ave. Suite 127, San Jose, Ca 95125, U.S.A.

Telephone: (408) 266-7404 FAX: (408) 266-4483

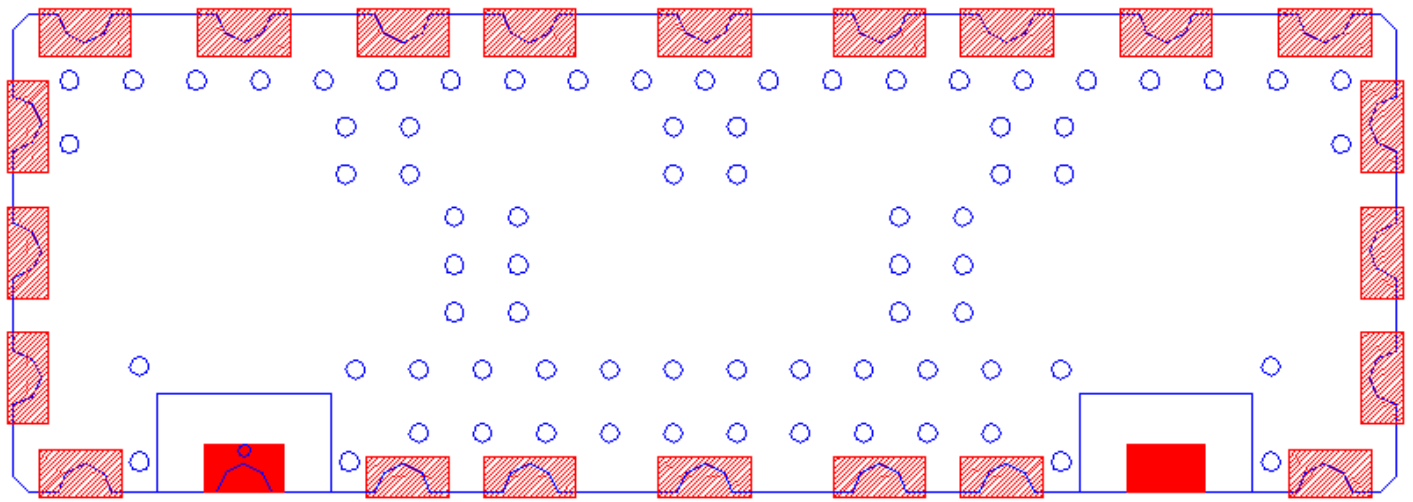
WEB: [www.raditek.com](http://www.raditek.com), E-mail: [sales@raditek.com](mailto:sales@raditek.com)


# RADITEK INC.

**Ceramic Band Pass Filter**  
**1850 MHz to 1910 MHz, 3 Watts, Surface Mount**  
**RBPF-1850-1910M-3W-S-cc**

code-j

## RECOMMENDED PC BOARD PATTERN



-  IN-OUT PORT SOLDERING POINT
-  GROUND SOLDERING POINT