

# RADITEK INC.

## Ceramic Band Pass Filter

1805 MHz to 1880 MHz, 3 Watts, Surface Mount

RBPF-1805-1880M-3W-S-cc

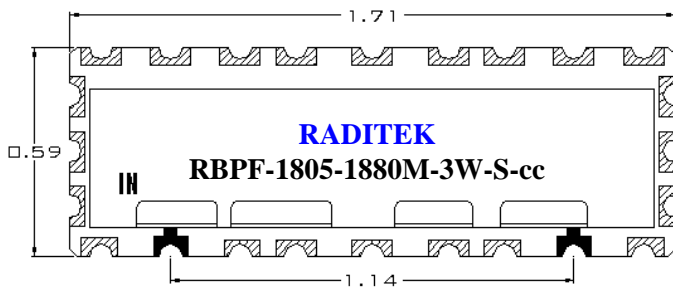
code-j2

### ELECTRICAL SPECIFICATIONS

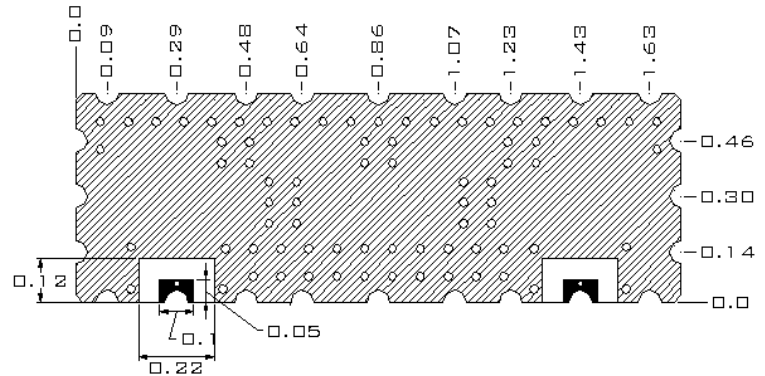
ITEM	SPEC	Unit
1	Center Frequency [fo]	1842.5
2	Bandwidth [BW]	fo ± 37.5 min. [ 1805 ~ 1880 ]
3	Insertion Loss at fo	3.0 max.
4	Ripple in BW	1.5 max.
5	Return Loss in BW	15.0 min.
6	Input Power	3W max.
7	In/Out Impedance	50 Ω
8	Attenuation [Absolute Value]	40.0 dB min. @ fo - 57.5 [1785] MHz
9	Operation Temperature Range	-40°C to +85°C

### DIMENSIONS

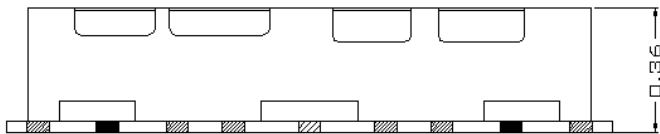
TOP VIEW



BOTTOM VIEW



FRONT VIEW



I/O PORT  
 GROUND  
 TOLERANCE : ±0.01  
 UNIT : INCH

RBPF-1805-1880M-3W-S-cc-j2

Specifications may be subject to change

03/27/07

WORLD HQ: 1702H Meridian Ave. Suite 127, San Jose, Ca 95125, U.S.A.

Telephone: (408) 266-7404 FAX: (408) 266-4483

WEB: [www.raditek.com](http://www.raditek.com), E-mail: [sales@raditek.com](mailto:sales@raditek.com)

# RADITEK INC.

**Ceramic Band Pass Filter**  
**1805 MHz to 1880 MHz, 3 Watts, Surface Mount**  
**RBPF-1805-1880M-3W-S-cc**

code-j2

## RECOMMENDED PC BOARD PATTERN

