

# RADITEK INC.

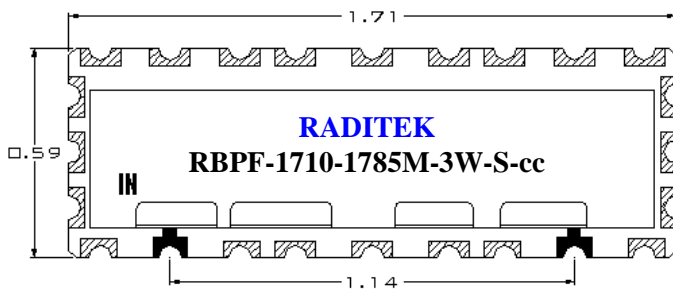
## Ceramic Band Pass Filter 1710 MHz to 1785 MHz, 3 Watts, Surface Mount RBPF-1710-1785M-3W-S-cc

code-j2

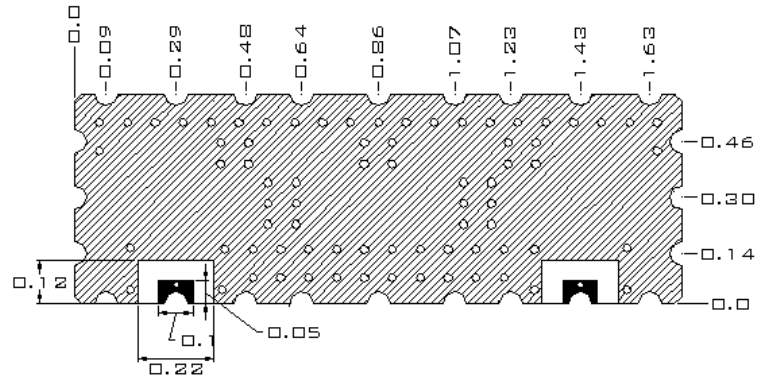
ELECTRICAL SPECIFICATIONS		
ITEM	SPEC	Unit
1	Center Frequency [fo]	1747.5
2	Bandwidth [BW]	fo ± 37.5 min. [ 1710 ~ 1785 ]
3	Insertion Loss at fo	3.0 max.
4	Ripple in BW	1.5 max.
5	Return Loss in BW	15.0 min.
6	Input Power	3W max.
7	In/Out Impedance	50 Ω
8	Attenuation [Absolute Value]	40.0 dB min. @ fo + 57.5 [1805] MHz
9	Operation Temperature Range	-40°C to +85°C

### DIMENSIONS

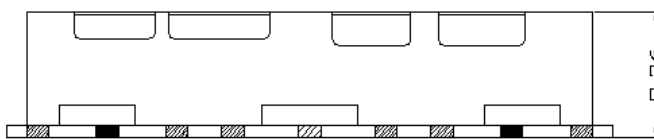
TOP VIEW



BOTTOM VIEW



FRONT VIEW



I/O PORT  
 GROUND  
 TOLERANCE : ±0.01  
 UNIT : INCH

# RADITEK INC.

**Ceramic Band Pass Filter**  
**1710 MHz to 1785 MHz, 3 Watts, Surface Mount**  
**RBPF-1710-1785M-3W-S-cc**

code-j2

## RECOMMENDED PC BOARD PATTERN

