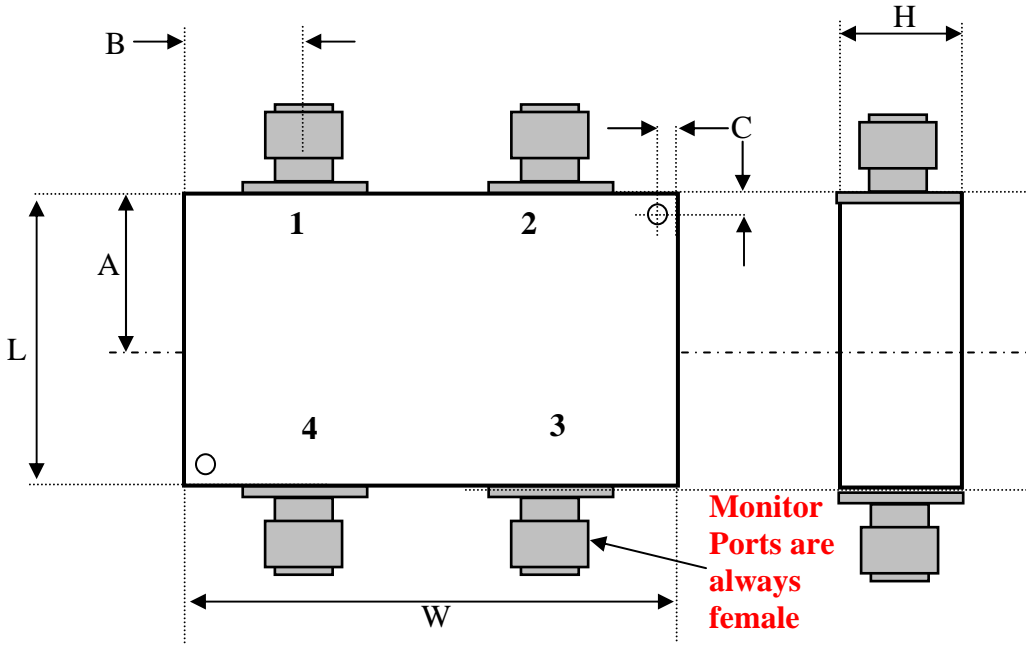


RADITEK INC.

Quadrature Hybrid Coupler, 300MHz to 18GHz 25% Bandwidth 3dB Coupling, SMA Connectors, 100 Watts

code-L



Dimensions (inches)	
L	1.75
W	0.75
H	0.6*
A	TBA
B	TBA
C	TBA

*1.0 for Male N-type connectors

Connector Options (XX)		
In	Out	code
female	male	1
male	female	2
female	female	3
male	male	4

SAMPLE PART # RQH-1200-1400M-3d-S3-100W

SX (SMA connector option)

NX (N-type connector option) up to 6GHz only.

Specifications:

Housing is Nickel plated Aluminum

Frequency	Up to 25% Bandwidth			GHz
	2.0-7.9	8.0-11.9	12.0-18.0	
Insertion loss	0.25*	0.4*	0.8*	dB max
Isolation	18	17	16	dB min
VSWR (all ports)	1.25:1	1.35	1.4	Max.
RF Power Average	100	75	50	Watt max.
RF Power Peak	1000			Watt max.
Phase Degrees	90 +/-3			Degrees
Amplitude Balance	+/- 0.5			dB
Coupling factor	3			dB
Connectors	SMA, N			
Temperature	-10 to +55			°C operating
	-30 to 125			°C storage

***Excluding theoretical insertion loss**

RQH-300M-18G-3dB-SX-100W-L

Specifications may be subject to change

11/20/06

WORLD HQ: 1702H Meridian Ave. Suite 127, San Jose, Ca 95125, U.S.A.

Telephone: (408) 266-7404 FAX: (408) 266-4483

WEB: www.raditek.com, E-mail: sales@raditek.com BOK 9/6/05

RADITEK INC.

Quadrature Hybrid Coupler, 300MHz to 18GHz 25% Bandwidth 3dB Coupling, SMA Connectors, 100 Watts

code-L

Frequency	470-860	1625-2925	1750-3100	2.0-4.0	MHz
Insertion loss	0.25	0.3*	0.3*	0.5	dB max
Isolation	20	18	18	18	dB min
VSWR (all ports)	1.25:1	1.25:1	1.25:1	1.3:1	Max.
RF Power Average	100	100	100	100	watt max.
RF Power Peak	1000	1000	1000	1000	watt max.
Phase Degrees	90+/-3	90 +/--3	90 +/--3	90 +/--3	
Amplitude Balance	0.5	+/- 0.5	+/- 0.5	+/- 0.5	
Coupling factor	3	3	3	3	
Connectors	SMA, N	SMA, N	SMA, N	SMA or N	
Temperature	-10 to +55	-10 to +55	-10 to +55	-10 to +55	°C operating
	-30 to 125	-30 to 125	-30 to 125	-30 to 125	°C storage

Frequency	3300-5300	3700-4250	4800-6800	11900-13900	12600-14600	MHz
Insertion loss	0.5*	0.3*	0.4	0.7*	0.7*	dB max
Isolation	18	18	18	16	16	dB min
VSWR (all ports)	1.3:1	1.3:1	1.3:1	1.4:1	1.4:1	Max.
RF Power Average	100	100	100	50	50	watt max.
RF Power Peak	1000	1000	1000	1000	1000	watt max.
Phase Degrees	90+/-3	90+/-3	90+/-3	90+/-3	90+/-3	
Amplitude Balance	0.5	0.5	0.5	0.5	0.5	
Coupling factor	3	3	3	3	3	
Connectors	SMA, N	SMA, N	SMA	SMA	SMA	
Temperature	-10 to +55	-10 to +55	-10 to +55	-10 to +55	-10 to +55	°C operating
	-30 to 125	-30 to 125	-30 to 125	-30 to 125	-30 to 125	°C storage

Tab 1	Tab 2	Tab 3	Tab 4
Input	Isolation	-90°	0°
Isolation	Input	0°	-90°
-90°	0°	Input	Isolation
0°	-90°	Isolation	Input

RQH-300M-18G-3dB-SX-100W-L

Specifications may be subject to change

11/20/06

WORLD HQ: 1702H Meridian Ave. Suite 127, San Jose, Ca 95125, U.S.A.

Telephone: (408) 266-7404 FAX: (408) 266-4483

WEB: www.raditek.com, E-mail: sales@raditek.com BOK 9/6/05