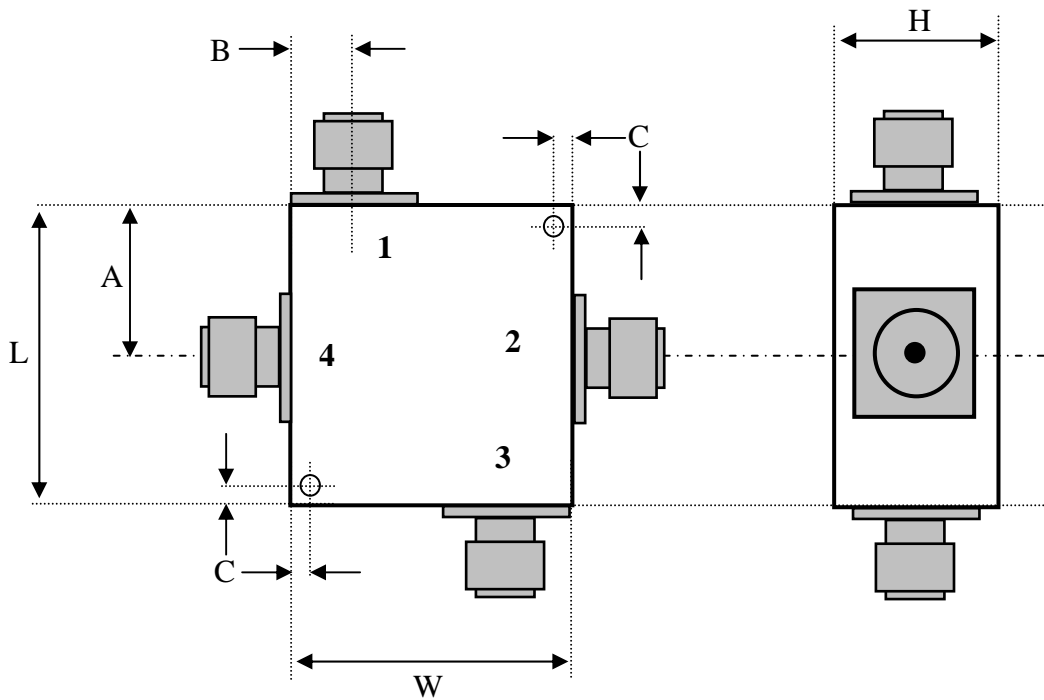


RADITEK INC.

Dual-Directional Coupler, Full Bandwidth 30 to 88MHz 30dB Coupling, SMA Connectors, 100 Watts

code-L



Dimensions (inches)	
L	0.75
W	1.75
H	0.45*
A	0.50
B	0.375
C	0.10

***0.88 for Female N-type,
1.00 for Male N-type and
7/16 connectors**

SAMPLE PART # [RDDCPL-30-88M-30d-S3-100W](#)

SX means SMA connector option.

NX for N-type connector option up to 6 GHz only.

(7/16-X) for 7/16 connector option up to 6GHz only

Specifications:

Frequency	30-88	MHz
Isolation	40	dB min
Insertion loss	0.15	dB max
VSWR (all ports)	1.12:1	Max.
RF Power Average	100	watt max.
RF Power Peak	1000	watt max.
Phase Degrees	+/-3	Degrees
Amplitude Balance	5.0	dB
Coupling factor	30	dB
Connectors	SMA, N or 7/16	
Temperature	-10 to +55	°C operating
	-30 to 125	°C storage

Housing is Nickel plated Aluminum

Connector Options S(X)		
In	Out	code
female	male	1
male	female	2
female	female	3
male	male	4