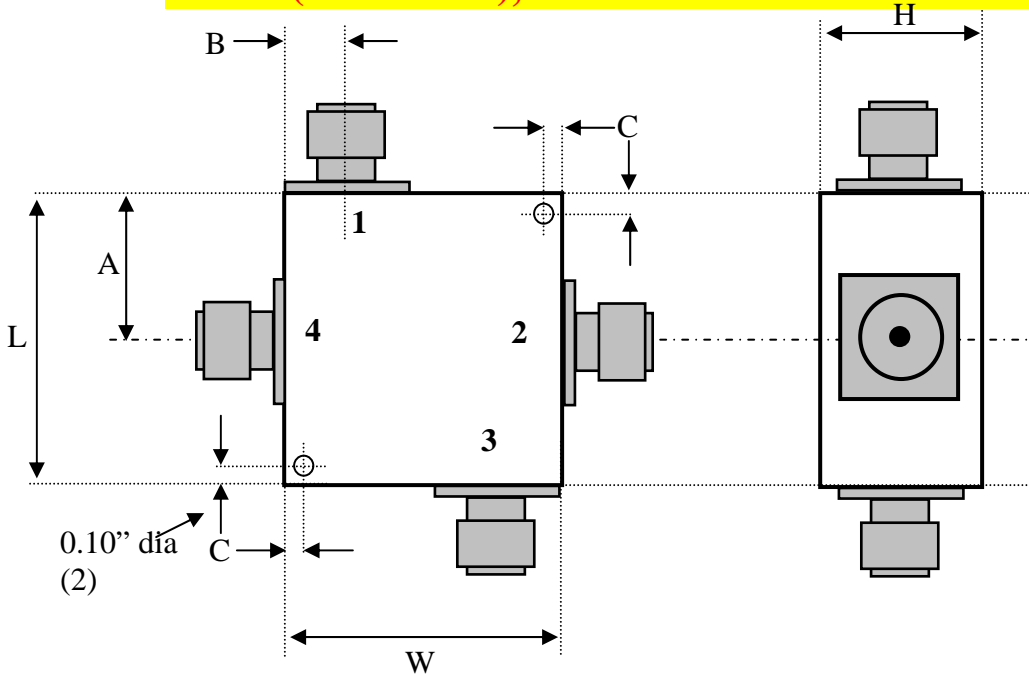


# RADITEK INC.

**COUPLER, 200MHZ to 18 GHz, 25% BANDWIDTH, 4 PORT**  
**6, 10, 20, 30, 40 dB COUPLING (+/- 1.5dB), 100 WATTS**

code-L

**SMAF (STANDARD), N or 7/16 CONNECTORS OPTIONS AVAILABLE,**



Dimensions (inches)	
L	1.75
W	0.75
H max sma	0.6
H max N-7/16	1.0"
A	0.875
B	0.25
C	0.05 tbc



Port Designations: See table on last page

**SAMPLE PART # RCPL-1200-1400M-6d-S3-100W**

**SX (SMA connector option).**

**NX (N-type connector option) Standard up to 6GHz only. Special over.**

**7/16-X (7/16 connector option) up to 6GHz only**

**Housing is Nickel plated Aluminum**

**Generic Specifications Table:**

Specifications	Any 25% Bandwidth			Units
	0.2-7.9	8.0-11.9	12.0-18.0	
Frequency				MHz
Isolation	20	19	17	dB min
Insertion loss	0.3	0.35	0.6	dB max * Excluding theoretical
VSWR (all ports)	1.2:1	1.3:1	1.4:1	Max.
RF Power Average	100			watt max.
RF Power Peak	1000			watt max.
Phase Degrees	90 +/-3			
Amplitude Balance	<± 0.5			
Temperature Operating	-10 to +55			°C
Temperature Storage	-30 to 125			°C

**RCPL-200M-18G-xdB-SX-100W(4-port)-L Specifications may be subject to change**

**08/07/08**

WORLD HQ: 1702H Meridian Ave. Suite 127, San Jose, Ca 95125, U.S.A.

Telephone: (408) 266-7404 FAX: (408) 266-4483

WEB: [www.raditek.com](http://www.raditek.com), E-mail: [sales@raditek.com](mailto:sales@raditek.com)

# RADITEK INC.

**COUPLER, 200MHZ to 18 GHz, 25% BANDWIDTH, 4 PORT**  
**6, 10, 20, 30, 40 dB COUPLING (+/- 1.5dB), 100 WATTS**

code-L

**SMAF (STANDARD), N or 7/16 CONNECTORS OPTIONS AVAILABLE,**

## Coupling / Theoretical Isolation and Insertion Loss Table

Coupling	<u>Theoretical Insertion Loss</u>	Isolation	Directivity
dB		dB	dB
6		20	26
10	1.2	22	32
15		25	40
20	0.04	29	49
30	0.004	39	69
40			

## Specific Specifications Table:

Specifications					Units
Frequency	<b>3.3-5.3</b>	<b>4.8-6.8</b>	<b>7.9-8.4</b>	<b>9-10</b>	<b>GHz</b>
Isolation	20	20	47	47	dB min
Insertion loss	0.3	0.3	0.6	0.6	dB max * Excluding theoretical
VSWR (all ports)	1.2:1	1.2:1	1.4:1	1.4:1	Max.
RF Power Average	100	100	100	100	watt max.
RF Power Peak	1000	1000	1000	1000	watt max.
Phase Degrees	90+/-3	90+/-3	90+/-3	90+/-3	
Amplitude Balance	0.5	0.5	0.5	0.5	
Coupling factor	See Table	See Table	30	30	
Temperature	-10 to +55	-10 to +55	-10 to +55	-10 to +55	°C operating
	-30 to 125	-30 to 125	-30 to 125	-30 to 125	°C storage

Specifications					Units
Frequency		<b>11.9-13.9</b>	<b>12.6-14.6</b>		<b>GHz</b>
Isolation		17	17		dB min
Insertion loss		0.6	0.6		dB max
VSWR (all ports)		1.4:1	1.4:1		Max.
RF Power Average		100	100		watt max.
RF Power Peak		1000	1000		watt max.
Phase Degrees		90+/-3	90+/-3		
Amplitude Balance		0.5	0.5		
Coupling factor		See Table	See Table		+/- 1.5dB
Temperature		-10 to +55	-10 to +55		°C operating
		-30 to 125	-30 to 125		°C storage

**RCPL-200M-18G-xdB-SX-100W(4-port)-L** Specifications may be subject to change

08/07/08

WORLD HQ: 1702H Meridian Ave. Suite 127, San Jose, Ca 95125, U.S.A.

Telephone: (408) 266-7404 FAX: (408) 266-4483

WEB: [www.raditek.com](http://www.raditek.com), E-mail: [sales@raditek.com](mailto:sales@raditek.com)

# RADITEK INC.

**COUPLER, 200MHZ to 18 GHz, 25% BANDWIDTH, 4 PORT**  
**6, 10, 20, 30, 40 dB COUPLING (+/- 1.5DB), 100 WATTS**

code-L

**SMAF (STANDARD), N or 7/16 CONNECTORS OPTIONS AVAILABLE,**

<b>Port 1</b>	<b>Port 2</b>	<b>Port 3</b>	<b>Port 4</b>
<b>Input</b>	<b>Isolation / Load</b>	<b>-90°</b>	<b>0°</b>
<b>Isolation / Load</b>	<b>Input</b>	<b>0°</b>	<b>-90°</b>
<b>-90°</b>	<b>0°</b>	<b>Input</b>	<b>Isolation / Load</b>
<b>0°</b>	<b>-90°</b>	<b>Isolation / Load</b>	<b>Input</b>