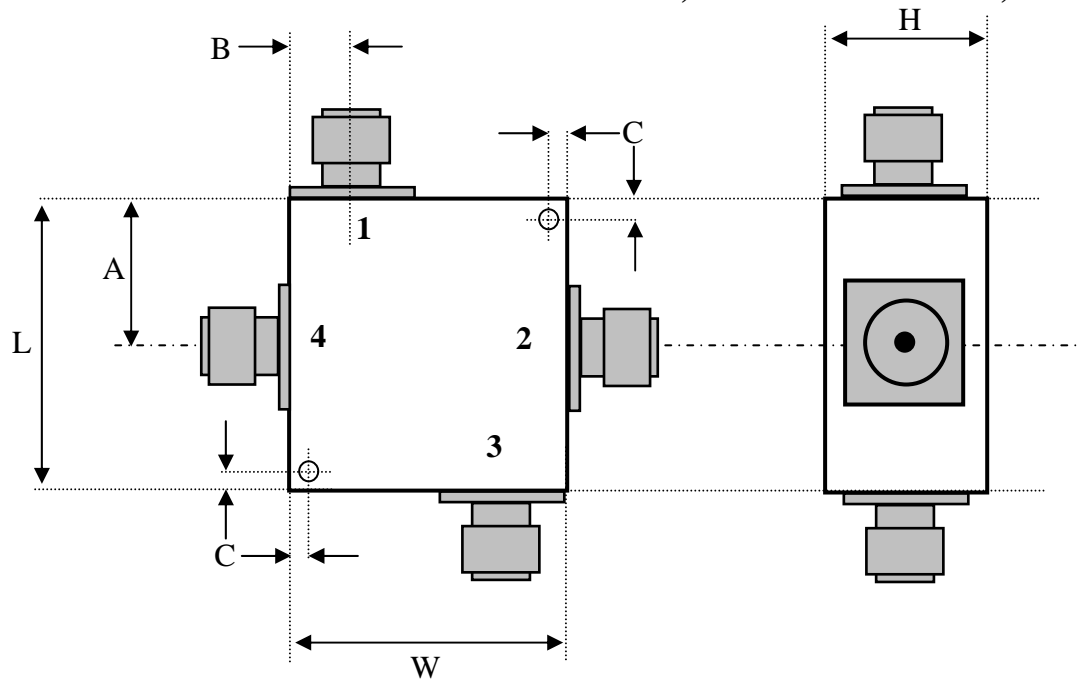


RADITEK INC.

COUPLER, 200MHZ to 18 GHz, 25% BANDWIDTH 6 dB COUPLING, SMA CONNECTORS, 100 WATTS

code-L



Dimensions (inches)	
L	1.75
W	0.75
H	0.6*
A	TBD
B	TBD
C	TBD

*1.0 for Male N-type and 7/16 connectors

Connector Options (XX)		
In	Out	code
female	male	1
male	female	2
female	female	3
male	male	4

SAMPLE PART # [RCPL-1200-1400M-6d-S3-100W](#)

SX (SMA connector option).

NX (N-type connector option) up to 6GHz only.

7/16-X (7/16 connector option) up to 6GHz only

Specifications:

Frequency	Any 25% Bandwidth			MHz
	0.2-7.9	8.0-11.9	12.0-18.0	
Isolation	20	19	17	dB min
Insertion loss	0.3*	0.35*	0.6*	dB max
VSWR (all ports)	1.2:1	1.3:1	1.4:1	Max.
RF Power Average	100			watt max.
RF Power Peak	1000			watt max.
Phase Degrees	90+/-3			
Amplitude Balance	0.5			
Coupling factor	6			
Connectors	SMA, N or 7/16			
Temperature	-10 to +55			°C operating
	-30 to 125			°C storage

*Excluding theoretical insertion loss

RADITEK INC.

COUPLER, 200MHZ to 18 GHZ, 25% BANDWIDTH 6 dB COUPLING, SMA CONNECTORS, 100 WATTS

code-L

Frequency	3300-5300	4800-6800	11900-13900	12600-14600	MHz
Isolation	20	20	17	17	dB min
Insertion loss	0.3*	0.3*	0.6*	0.6*	dB max
VSWR (all ports)	1.2:1	1.2:1	1.4:1	1.4:1	Max.
RF Power Average	100	100	100	100	watt max.
RF Power Peak	1000	1000	1000	1000	watt max.
Phase Degrees	90+/-3	90+/-3	90+/-3	90+/-3	
Amplitude Balance	0.5	0.5	0.5	0.5	
Coupling factor	6	6	6	6	
Connectors	SMA, N or 7/16	SMA, N	SMA	SMA	
Temperature	-10 to +55	-10 to +55	-10 to +55	-10 to +55	°C operating
	-30 to 125	-30 to 125	-30 to 125	-30 to 125	°C storage

Housing is Nickel plated Aluminum

***Excluding theoretical insertion loss**

Tab 1	Tab 2	Tab 3	Tab 4
Input	Isolation	-90°	0°
Isolation	Input	0°	-90°
-90°	0°	Input	Isolation
0°	-90°	Isolation	Input